



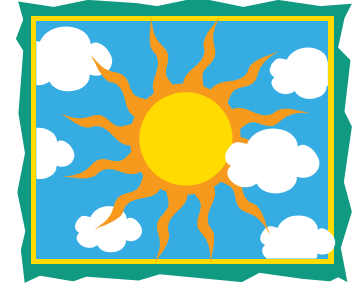
CONNECTION

Greater Kansas City Chapter #92

Summer, 2005

IN THIS ISSUE

- | | |
|-------------------------------------|----------------------------|
| 1 – Summer Planning Session Details | 6 – Membership Update |
| 2 – President’s Message | 7 – CAR Update |
| 3 – National Conference Notes | 8 – News from Headquarters |
| 4 – Union Cemetery Follow-Up | 9 – Career Center Info |
| 5 – KSU IMSE Awards Banquet | 10 – Officer Listing |



1 – SUMMER PLANNING SESSION DETAILS – TUESDAY, JULY 19

Every current IIE member is invited to attend this year’s Summer Planning Session. We will discuss our goals for the upcoming program year, a potential meeting schedule, our Chapter Conference, and officer elections. If you have ideas for the meeting or are considering being an officer, please contact President Elect Keith Johnson at kjohns7@hallmark.com if you have not already.

- When:** Tuesday, July 19th
Time: 4:00 – 7:00 p.m.
Cost: Free. Refreshments provided.
Where: Conference Room at Cedar Roe Library in Roeland Park, KS



Please RSVP by July 15th to Keith Johnson at kjohns7@hallmark.com and he will provide you with more detailed directions and a meeting agenda.

2 – PRESIDENT’S MESSAGE

Hello everyone! Summer heat is here and as always, that means our program year is coming to a close. Our final activity for the 2004/2005 program year was the annual community service project at Union Hill Cemetery. I would like to personally thank Beth Kelley and Amy Martens for their hard work in coordinating the event. I believe the cemetery caretakers appreciate our support in helping make their grounds look attractive for the visiting families.

Later this month, we will elect new officers and plan the schedule of events for the next program year that starts in September 2005. If you are interested in becoming more involved with the organization or would simply like to provide input into what we decide to do next year, I encourage you to attend.

Finally, I would like to thank all of the current officers for a great year. Your hard work and dedication was very much appreciated!

Aaron Cross

3 – NOTES FROM THE NATIONAL CONFERENCE

Destination Atlanta!

The 2005 IIE Annual Conference was held in Atlanta, GA on May 14-18. I attended the conference on behalf of the Kansas City Chapter. I was able to attend many different sessions on lean implementation, management tools, and ergonomics; just to name a few. The most beneficial session was actually before the conference even started. I attended the Volunteer Leadership Training (VOLT) session. This was an opportunity for chapter members to share ideas, discuss issues, and become better leaders. I also presented some of the successes that the Kansas City Chapter has had with our own annual conference.

In addition to just attending the conference, I was able to accept the Gold Award for our 2004 chapter activities. The Kansas City Chapter was one of only five chapters who received the gold award this year. We should be very proud of achieving this goal. Also, my discussions with other chapters confirmed my feelings that we have a very vibrant and active chapter within our community. Kansas City has served as a model for other chapters as they attempt to grow and prosper. Thanks again to everyone for making the Kansas City chapter one of the best that IIE has.

Keith Johnson
President Elect

4 – UNION CEMETERY FOLLOW-UP

Thanks to everyone who showed up to help with the Union Cemetery workday. Despite 90-degree temperatures, we exceeded the work planned by the Historical Society, who provided a great lunch for us. Our focus was spent on cleaning some very old military headstones, which will be included in an upcoming Military tour. Future requests include marking some jogging trails and help with website development for the historical society. Stay tuned for information on future workdays!!



5 –KSU IMSE AWARDS BANQUET

The annual Kansas State University Industrial and Manufacturing Systems Awards Banquet was held on April 28th in Manhattan. IIE donates \$500 each to the Kansas State and Missouri Student Chapters of IIE. The KSU chapter divided the donation into three prizes, given to students who earned the most points for IIE involvement. Photos from the event are included below.



Student Chapter Liaison Kyle Grabill explains the awards.



President Elect Keith Johnson presents the Alpha Award (\$250) to Kristen Kuntz.



**Keith presents the Beta Award
(\$150) Ashley Roos.**



**Keith presents the Gamma Award
(\$100) to Jared Graff.**

6 – MEMBERSHIP UPDATE

Region 5, Chapter 92, Membership 118

This month we would like to recognize some of our members who have hit a milestone in their years of membership with IIE. Please join us in congratulating the following members:

David Farmer – 30 years
Gary Hanson – 40 years
Frank Tillman – 40 years

On behalf of IIE and our local chapter, thank you for your dedication to our professional society!

40-Year Member Profile: Gary Hanson

Gary graduated from the University of Missouri, Columbia (then known as Missouri University) in 1964 with a BS in Industrial Management. After graduation, he began working at the Kansas City Bendix Plant as a Methods Engineer. From 1966 to 1968, he worked at Certain-Teed St Gobain in Kansas City, Kansas as an Industrial Engineer; then at Vendo Co. from 1968 to 1969 as a Manufacturing Engineer; then at Rival Manufacturing Co. from 1969 to 1970 as an Industrial Engineer; then at Puritan Equipment in Lenexa, Kansas as a Manufacturing Engineer. Gary returned to the Bendix Plant (which was then known as Allied Corporation, later Allied-Signal, and then Honeywell FMT) as an Industrial Engineer and now a Process Engineer. This facility is part of the Nuclear Weapons Complex run by the Department of Energy and makes non-nuclear components for the nuclear weapons systems. From 1965 to 1996, Gary was also in the Military Reserve system: the Army Reserve, the Navy Reserve, where he made Chief Petty Officer, the Air National Guard, and the Army National Guard.

Gary and his wife Cheryl were married in 1966 and have two children. (Jason is Assistant City Engineer for the City of Raytown, and Jill is a pharmacist in the Kansas City area.) They live in Lee's Summit. Gary and Cheryl share a mutual love/passion for Corvettes and Mustangs – owning, driving, and showing at local and national shows. Gary drives a '75 Corvette to work as his daily driver. They also enjoy traveling.

Gary has seen many changes over five decades of working since graduation. He says the most significant changes, of course, were in the use of computers, simulation, modeling tools, etc. He also noted the dramatic change in the job functions of the IE – from a "time study" engineer to a much broader base of job responsibilities. Gary's basic advice, which he claims is not rocket science, is to "stay on top of technology advancements, be ethical, and maintain good work habits."

7 – CAR UPDATE

IIE Mission Statement

IIE provides leadership in developing industrial engineering; in representing the industrial engineering profession; and in enhancing the capabilities of those who are involved in or manage the application, education, training, research or development of industrial engineering.

I would like to thank the members who participated in the Union Hill Cemetery work day. These members and other members continue to do a great job of “*representing the industrial engineering profession.*” These community outreach activities count towards our overall chapter health on the CAR. IIE encourages chapters to get involved in their community through volunteering. In the past year we had members who worked with schools, non-profit agencies, Junior Achievement, and other organizations by educating individuals about industrial engineering. If you have participated in any of these activities or would like to participate when opportunities arise, please contact me.

Thanks,

Keith Johnson
President Elect

8 – NEWS FROM HEADQUARTERS

Online Six Sigma Workshop

IIE will host an online Six Sigma Green Belt workshop on July 11th. Click here to [register](#).

(Source: the June, 2005 *eBrief*)

Link to the National IIE Home Page: <http://iienet.org>

Link for Membership Renewal: <http://web.iienet.org>

9 – CAREER CENTER INFORMATION

Whether or not you are looking for a job, check out the IIE Career Center at <http://www.iienet.org/public/articles/index.cfm?cat=704>. In addition to reviewing job postings, visitors can participate in a salary survey, find information that helps explain the profession, enter a job-seekers chat room, and more!

10 – OFFICER LISTING

President – Aaron Cross, ThinkReliability, 8830 Horton, Overland Park, KS 66207 (913) 825-1337 or (913) 481-9949, aaron_d_cross@yahoo.com

President Elect – Keith Johnson, Hallmark Cards, 240 Madison, Topeka, KS 66607 (785) 233-3241, kjohns7@hallmark.com

Treasurer- Jeff Poehls, Farmland, 13104 W 76th St., Lenexa, KS 66216 (913) 268-7881, ripoehls@farmland.com

Secretary – Robert Stillwell, Yellow Roadway Enterprise Services, 10990 Roe Avenue, Overland Park, KS 66211 (913) 344-3830, robert.stillwell@yellowroadway.com

Membership Chair – Anita Ranhotra, Hallmark Cards, 450 Eisenhower Road, Leavenworth, KS 66048 (913) 727-6692 x489, fax (913) 702-1543, aranho2@hallmark.com

Membership Co-Chair – Jessica Johnson, Nestle Purina PetCare, 3216 B N Woodbine, St. Joseph, MO 64506 (816) 396-2173, jessica.johnson@purina.com

Newsletter Editor – Jennifer Albers, Yellow Roadway Enterprise Services, 21725 W. 56th Street, Shawnee, KS 66218 (913) 441-8527, jennifer.albers@yellowcorp.com

Distribution – Jay Christensen, JCPenney, 10500 Lackman Rd, Lenexa, KS 66219 (913) 541-2324, kjchrist@jcpenny.com

Webmaster – Steven Sturis, Sprint, 8830 Horton, Overland Park, KS 66207 (913) 383-3187, sturis1@hotmail.com

Corporate Relations – Brian McCarthy, Missouri Enterprise, 4747 Troost Avenue, Kansas City, MO 64110-2499 (816) 235-6794, fax (816) 235-6792, bmccarthy@missourienterprise.org

Student Chapter Liaison (KSU) – Kyle Grabill, 812 Goodrich, Manhattan, KS 66502 (913) 636-2991, kdgrabill@yahoo.com

Student Chapter Liaison (MU) – Andrea Prouty, Protiviti, 10801 Mastin Blvd., Suite 350, Overland Park, KS 66210 (913) 685-6250, andrea.prouty@protiviti.com

Conference Director – Lori Ashford, Robbie Manufacturing, 10810 Mid America Ave, Lenexa, KS 66219 (913) 492-3400, fax (913) 492-1543, loria@robbiemfg.com

Co-Conference Director – Brandy Collins, Sprint, 6100 Sprint Parkway, Overland Park, KS 66251 MS: KSOPHK0214-2B558 (913) 315-4285, fax (913)315-3929, brandy.l.collins@mail.sprint.com

Conference Committee – Brian Ward, Suite 700, 114 W. 11th St., Kansas City, MO 64105 (816) 559-0632, brian.ward@marketsphere.com

Community Affairs Co-Chair – Beth Kelley, Hallmark Cards, 450 Eisenhower Road, Leavenworth, KS 66048 (913) 727-6692 x323, fax (913) 727-2423, bkelle1@hallmark.com

Community Affairs Co-Chair – Amy Martens, P.E. – Blue Cross Blue Shield of KS, 1133 SW Topeka Blvd, Topeka, KS 66629 (785) 291-7610, fax (785) 290-0801, amy.martens@bcbsks.com

JEC Rep. – Gary Hanson, Honeywell FMT, 2000 E 95th St, Kansas City, MO 64131 (816) 997-5563, fax (816) 997-5649, ghanson@kcp.com

Board Members -

- Bill Czeschin**, (816)796-6231, czeschin@msn.com
- Quarterman Lee**, (816) 931-1414, qlee@strategosinc.com
- Bill Wrennall**, (913)681-8435, wrennall@tgltd.com
