



CONNECTION

Greater Kansas City Chapter #92

January 2009

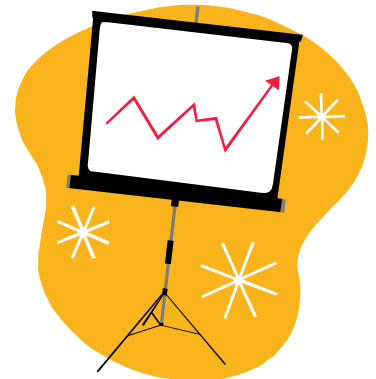
IN THIS ISSUE

| | pg. | | pg. |
|------------------------------|-----|--------------------------------|------|
| 1 – January Meeting Details | 1-2 | 5 – Membership Update | 5 |
| 2 – New Member Welcome | 3 | 6 – News from Headquarters | 5 |
| 3 – February Meeting Preview | 3 | 7 – Chapter Update | 6 |
| 4 – President’s Message | 3-4 | 8 – Officer Profiles & Listing | 7-11 |

1 - JANUARY MEETING

Business Excellence Strategies for Startup Companies - Joint Meeting with ASQ

ASQ 1301 and IIE Greater Kansas City will be presenting a workshop on January 17 on key business excellence strategies and methods for start-up and early stage companies. These methods can help put small firms on the path from concept to growth and success.



You will learn about the use of business excellence methodologies throughout the product life cycle, from new product development and introduction through production scale up. You will also hear case studies from local firms who have successfully managed the process from startup to successful operation. There will also be a panel discussion on lessons learned.

When: Saturday, January 17th 8:00am – Noon

An excellent continental breakfast will be served!

Where: Regnier Center at Johnson County Community College

Johnson County Community College

12345 College Blvd., RC159 Box 26

Overland Park, KS 66210 <http://www.asq1301.org/JCCC-Directions.pdf>

Cost: \$20 with reservations, \$25 without reservations, \$10 for students with a valid ID

RSVP: via <http://www.asq1301.org/reservations.asp> or contact Brian McCarthy

(bmccarthy@mamtc.com; 913-967-1226) by 1/14

CONTINUED ON PAGE 2

1 - JANUARY MEETING CONT.

The workshop will include the following speakers:

Jairo de Jesus will present on strategies for successful production ramp-up and scale up to volume manufacturing. Jairo serves as Director of Industrial Engineering for Farmland Foods, Inc. Jairo has expertise in Project Management (provided design, project planning, and implementation for a variety of large projects that had a major impact on improving operations, efficiency, and profits), Industrial Maintenance and Management (managed teams of employees ensuring compliance, ergonomically environments, and regulations standards of operations management), Operations Management (supported operations in various capacities, including start-up, troubleshooting, environmental compliance, production upgrades, quality-control testing, maintenance, and new equipment commissioning), Implementation of Automation Concepts (robotic palletization and slaughter automation), and utilization of Lean Manufacturing, Six Sigma, and Classical IE tools. Jairo utilized such skills in the Retail, Logistics, and Manufacturing industries.

Brian Finnerty will give an overview of product development strategies, focused on development of new products for the consumer market. Brian is Senior Director of Device Development at Sprint Nextel Corporation. He has led the product and engineering development of Sprint's mobile devices since the inception of Sprint's wireless services more than 12 years ago. At Sprint, he and his team work closely with various organizations, such as Marketing, Supply Chain Management, and various Quality Assurance groups, and several telecommunications product and service providers. Brian is considered a thought leader in the wireless telecommunications industry.

Mike Litscher will give a presentation on startup best practices for manufacturing facilities, focusing on the pharmaceutical and medical device industries. He will cover facility, quality and regulatory issues, as well as staffing considerations. Mike is President and CEO of KC Biomedix, a Shawnee manufacturer of medical devices used in neonatal therapy. Prior to that, he was responsible for the startup of Serologicals, a Lawrence-based pharmaceutical manufacturer. Prior to that, Mike was at GE Medical, where he held a number of progressively responsible technical and management positions in their medical imaging businesses.

Brian McCarthy will provide either a case study or personal testimonial, of a successful improvement implementation at a local company. Brian is a Sr. Field Engineer/Project Manager with about 12 years experience at the Mid-America Manufacturing Technology Center (MAMTC) and serves as Joint Engineering Council Rep./Corporate Relations Chair for IIE Greater Kansas City Chapter.

2 – NEW MEMBER WELCOME



All members new to the KCIIE chapter in 2008 should have received an invitation to a new member welcome on January 27th. If you did not receive this invitation, please contact Rachel Olson (rolson2@hallmark.com)

3 – FEBRUARY MEETING PREVIEW



Operating from headquarters in Kansas City, Missouri, KCP&L has evolved into a full-service energy provider and resource. The company was founded in 1882 and has become one of the Midwest's most affordable energy suppliers because of our leadership in fuel procurement, plant technology and efficient power production and distribution. KCP&L services more than 800,000 customers in 47 northwestern Missouri and eastern Kansas counties - a service territory of approximately 18,000 square miles. Delivering that power requires 3,300 miles of transmission lines, close to 25,000 miles of distribution lines and 322 substations. The Greater Kansas City Chapter of IIE will be assembling a power plant tour to one of KCP&L's power plants during the month of February. Further information to follow in our February's newsletter.

4 – PRESIDENT'S MESSAGE

Happy New Year to all members of the Greater Kansas City Chapter of IIE! I hope that you and your family have had a great Christmas and wish that 2009 has already proven to be a great and energized year for you and your family! What a great year 2008 was for our chapter. Under the presidency of Liz Fine, we've accomplished great things for our chapter and membership. We've conducted various meetings, community service events, and tours to exciting places such as the Nelson Atkins Museum, KC General Motors' plant, Associated Wholesale Grocers' Warehouse, Cook's Ham Plant, and others.

We developed a great career mentor day for K-State and Mizzou students providing them with a very informative tour at the RR Donnelley print facility and concluded the year with an outstanding Fall conference "Asking the Right Questions: Management's Key to Lean Transformation." The proceedings of such conference will allow our chapter to continue our great tradition to provide scholarships to IIE students members from Kansas State University and Missouri University.

2009 is in the works to be another great year for our chapter!

CONTINUED ON PAGE 4

4 – PRESIDENT’S MESSAGE CONT.

We are about to finalize all details regarding our Chapter Activity Report (CAR) and submit it in order to continue our excellence as a Gold Chapter in IIE. Our executive board has developed a great plan with more exciting and informative events to all of our members that will include exposure to new venues not yet visited by our chapter, such as one of the power plants of Kansas City’s main electricity provider, Kansas City Power and Light, while still maintaining our tradition of continuous improvement and manufacturing excellence by visiting leading companies such as Garmin and Frito Lay.

We also would like to increase our presence in the community and getting engaged in more community service type of activities while continuing our legacy of giving back to the community with activities such as the Union Cemetery, 1st Robotics Competition, US 500 District Math Relays, Harvesters, and others.

Nevertheless, our chapter will only be successful with your participation and support! You can assist our chapter by participating in our events and helping us to promote IIE to prospective members and past non-active members and let them know all of the great things that we do in the Greater Kansas City area. Recruitment and reclamation will be one of our banners for calendar year 2009.

Buckle up tight and enjoy the 2009 ride with the Greater Kansas City Chapter of IIE!

Jairo de Jesus

President



2009 Planning Session

Brian McCarthy, Jay Christensen, Teniece Hardy, Rachel Olson, Jairo de Jesus (not pictured: Beth Kelley, Anita Ranhotra)



Presentation of a gift of appreciation to outgoing president, Liz Fine

Jennifer Hedberg, Jairo de Jesus, Liz Fine, Rachel Olson, Anita Ranhotra

5 - MEMBERSHIP UPDATE

Region: South Central; Chapter: 92; Membership: 100

Welcome New Member – Danielle Pippitt

Member Profiles:

Jeff Poehls is the Plant Manager at the Farmland Foods facility in Martin City, MO. As a plant manager, Jeff utilizes many of his IE tools combined with strong leadership that he honed over the years. Jeff says, “as IE's, we develop many great ideas. The fun part of my job is making these ideas happen through a strong team of people. The most rewarding aspect of my job is growing people to become tomorrow’s leaders.”

Jeff just rejoined the Greater KC IIE chapter after moving back from Salt Lake City, UT where he was the Plant Manager at the Farmland Foods facility there. Jeff received his BS IE from Purdue University in 1990. He was raised on a large dairy, grain, and beef farm in Martinsville, Indiana. Jeff’s wife of 13 years is Jodi. They are fortunate that she is able to stay home and raise our 3 children, Sydney 10, and fraternal twins - Aiden (boy) and Jordan (Girl) who will be 7 in November. His children are active in a variety of activities (soccer, swimming, dance, bike riding). Jeff enjoys playing golf, dirtbike riding on his WR450, bike riding, and basketball. His wife is a fantastic cook and she enjoys bike riding, reading, and volunteering at the kids’ school.

Danielle Pippitt is a Management Engineer at Blue Cross and Blue Shield of Kansas. She started at BCBSKS in June 2008. Danielle graduated from K-State in May 2002 with a BS Industrial Engineering. Out of school, she went to work for UPS in Lenexa for 2 years. After UPS, she moved to Topeka and worked at Cardinal Brands (Adams Business Forms) until starting at BCBSKS. Danielle’s husband Justin graduated from K-State in 2002 with a BS in Electrical Engineering. In their spare time, Danielle and Justin attend many KSU basketball and football games.

6 – NEWS FROM HEADQUARTERS

It’s time for elections! By now you should have all received an email providing you with your member number and e-signature for the IIE Elections. These elections are for two things 1 – the Board of Trustees and Regional Vice President office positions and 2 – the proposed IIE name change.

Elections are open until midnight Eastern time on February 5, 2009. If you did not receive this information via email, please contact IIE customer service at 1-800-494-0460.

And remember, our very own Jay Christensen is running for Regional Vice President!



7 - CHAPTER UPDATE

With each New Year comes the opportunity to reflect on the past and look forward to the opportunities that lie ahead. Many of us find ourselves making New Year's resolutions during this time in an effort to continuously improve in our personal and professional lives. This is also a time of reflection and planning for our KC IIE Senior Chapter. One of the tools that we use during this reflection and planning process is the Chapter Activity Report (CAR). The CAR provides a method for measuring the chapter's performance as well as identifying and tracking areas for improvement. Over the next month, our KC Chapter will be completing the annual process of submitting our Chapter Activity Report to IIE Headquarters. Headquarters will grade our chapter's performance in the following areas:

- 1: Chapter Strategic Plans & Operations
- 2: Chapter Programs
- 3: Membership Communications, Growth & Retention
- 4: Student Outreach & Community Affairs
- 5: Member/Chapter/Institute Support

Our chapter will use this feedback to help identify areas for improvement for the upcoming year. We will also be looking to you as local members to provide feedback and ideas on ways that we can provide ever increasing value to our members.

During the upcoming months, this section of our newsletter will highlight different aspects of the CAR and demonstrate how our chapter's activities are being scored in regards to the chapter's efforts.

We look forward to the chapter's activities in 2009 and hope that these activities provide increasing value to you as an IIE member.

Sincerely,

Kyle Grabill

President - Elect

Are you looking for a way to get more involved in your local IIE chapter? Do you want to give back to the community and to the profession? If you answered "YES" to either question, we have an opportunity for you! The KCIIE chapter has initiated committees for various projects and is currently looking for volunteers to help with Community Service and the Fall Conference. If you are interested in serving on a committee, please contact Beth Kelley (bkelle1@hallmark.com) for Community Service and Kyle Grabill (kyle.grabill@garmin.com) for the Fall Conference!

8 - OFFICER PROFILES & LISTING

Jairo de Jesus (President) - As a Director, Industrial Engineering for Farmland



Foods, Inc., one Jairo's main responsibilities include directing the preparation and implementation of the overall Farmland Foods' IE program and process guideline to provide productivity, quality improvements, and operational efficiencies of the plant operations.

Jairo de Jesus holds a Bachelors of Science in Industrial Engineering (University of Arkansas), a Masters of Business

Administration (Baker University) and is currently pursuing a Masters of Science in Industrial Management and Systems Engineering from the University of Nebraska – Lincoln. Along with certifications in Methods Time Measurement (MTM-1) Blue Card Certification from the MTM Institute, Lean Manufacturing Certification from the University of Michigan, Six Sigma – Green Belt Certification from the Institute of Industrial Engineering (IIE), and a certificate of RFID SCM (RFID Supply Chain Manager) from the International Supply Chain Education Alliance. Jairo is a Senior Member of the Institute of Industrial Engineers (IIE), Life Member of the Kappa Alpha Psi Fraternity, Inc., Alumni Member of the National Society of Black Engineers (NSBE), and Member of the National Association for the Advancement of Colored People (NAACP), serving as the 2nd Vice-President of the Johnson County Chapter. He is also the President of the Process Industries Division of IIE and Board Member of the University of Arkansas Vice Chancellor of Students Affair Advisory Council.

Kyle Grabill (President Elect) - Kyle is a Manager of Special Projects at Garmin



International in Olathe, Kansas. In this role, Kyle manages a variety of projects within Garmin Operations that focus on the strategic development of the business. Kyle previously worked as an Industrial Engineer for the Intel Corporation in Chandler, Arizona and as a Graduate Student Fellow for NASA in Cape Canaveral, Florida. Kyle earned a BS and MS in Industrial Engineering at Kansas State University. Kyle has been an active member in IIE since his college days at Kansas State and has held multiple officer positions, including Assistant Regional Vice President for the South Central and Western Regions of IIE. Kyle also serves on the advisory council for Kansas State's Industrial and Manufacturing Systems Engineering Department.

8 - OFFICER PROFILES & LISTING CONT.

Liz Fine (Past President) - Liz Fine is a Product Development Engineer at Hallmark



Cards, Inc where she develops the light, sound, and motion for Keepsakes ornaments and products. Liz earned a BS in Industrial Engineering from the University of Missouri – Columbia and an MBA from the University of Kansas. Her career at Hallmark, now going on eight years, began with a summer internship. Prior to her current position, she supported Lawrence’s manufacturing facility in various roles as a manager, a process improvement engineer, and lastly as a Lean project manager. Raised in St. Louis, Missouri, Liz now resides in Lawrence, Kansas. She is heavily involved in Operations recruiting for Hallmark. She’s served on the Board of Directors for the Ballard Community Center, and also as President of the Kansas City Chapter of IIE. Liz is a huge fan of the St. Louis Cardinals and outside of work enjoys camping, scuba diving, and playing tennis – all of which she’s experienced for the first time in the last year.

Aleia Vest (Secretary) - Aleia Maciula holds a Bachelors of Science in Industrial



Engineering and Management from Oklahoma State University. Currently, she works for Nebraska Furniture Mart as a Process Engineer in the Kansas City location. Aleia was an active member of IIE throughout college and has held the position of secretary for the IIE Kansas City chapter since 2008.

Jennifer Hedberg (Treasurer) -Jennifer is a Strategic Buyer in Contract Services at



Hallmark Cards, Inc. in Kansas City. Her main area of buying is 3PLs, Warehousing, and Operational Services. She began her professional career at the Hallmark Distribution Center in June 2003 where she has been a front-line manager and process improvement engineer before moving into her latest position at Hallmark corporate headquarters in Procurement. Raised in North Dakota, Jennifer now resides in Prairie Village, KS. Jennifer is an avid college football fan and SCUBA diver. Jennifer earned a BS in Industrial and Manufacturing Systems Engineering from Mizzou and is currently pursuing her MBA at Rockhurst University with a 2009 graduation date. Jennifer is a Certified Professional in Supply Management (CPSM) through the Institute for Supply Management.

8 - OFFICER PROFILES & LISTING CONT.

Anita Ranhotra (Newsletter Editor) – Anita is a Quality Systems Manager at Hallmark Cards, Inc. Prior to her current position, she worked as a procurement category manager, senior strategic buyer, and an engineer in various facilities at Hallmark. Prior to Hallmark, Anita worked for The Limited in Columbus, OH and Payless ShoeSource in Topeka, KS. Anita earned her BS in Industrial Engineering and Masters in Engineering Management, both from Kansas State



University. Anita's involvement in IIE goes back to her days as a student. Since then she has held a variety of roles within IIE, including KC Chapter President and Regional Vice President. Anita also served on the National IIE Board of Trustees as the Senior Vice President – Chapters and found working with chapters all over North America to be a very rewarding experience. Anita also serves on the advisory council for KState's Industrial and Manufacturing Systems Engineering Department.

Brian McCarthy (Corporate Relations) – Brian is a Senior Field Engineer/Project Manager at Mid-America Manufacturing Technology Center (MAMTC) for the past 12+ years. In this role, Brian manages multiple projects for a variety of Kansas manufacturing entities. Brian has been a leader in the design, planning and implementation of manufacturing processes, material handling systems, production facilities, distribution centers and warehouse layout projects for over 30 years. He has a very strong background in Lean Enterprise, Manufacturing Process Improvements, Operations and Industrial Engineering. He has a great deal of experience with Work Teams, Employee Involvement, TQM and Continuous Improvement Planning (CIP). He plans, trains and coaches companies and their employees, in Lean Enterprise Transformation (LET) concepts and implementation projects. He is experienced in planning and implementation for improved process and material flow, facilities expansion, and design and implementation of existing and new facilities. Brian has undergraduate degrees in both Industrial Engineering and Business from the University of Wisconsin branches in Appleton and Oshkosh, and a Masters of Science in Engineering Management from the University of Kansas. He has been involved with IIE since 3/1/87 and is currently a Senior Member that has held numerous positions over the years including President, President Elect, etc. Also, Brian serves as a Senior Member for both the ASQ and SME Local Chapters.



8 - OFFICER PROFILES & LISTING CONT.

Rachel Olson (Membership Chair) - Rachel Olson is a Lean Implementation Leader at Hallmark Cards. In this position, she works with the Start of Production departments, Production Planning and Imposition, to reduce lead-times, work in process, and remove waste out of their processes. Rachel is also responsible for training managers and employees on Lean tools, management structure, and mindsets.



Rachel holds a Bachelors of Science degree in Industrial Engineering from Kansas State University and a Masters of Business Administration from the University of Kansas. She has worked at Hallmark for eight years in several positions including Engineering, Front-line management, and Hallmark.com Rachel and her husband, Joe, currently live in Westwood, KS with their cats, Minou and Oliver. They are expecting their first child in May 2009.

Beth Kelley (Community Affairs Chair) – Beth Kelley is currently the Lean Strategy and Implementation Manager at Hallmark's Leavenworth Production Facility. In this position she is responsible for working with each of the production departments developing and implementing changes related to eliminating waste and improving product flow. Beth graduated from the University of Missouri - Columbia with a Bachelor of Science in Industrial Engineering. After several years of working, she also obtained her MSIE and MBA. Originally from the St. Louis area, she has worked at several companies, spending the last 15 years in various positions at Hallmark Cards. Positions have included Leavenworth Engineering Manager and 18 months as a manager at LithoKrome, a Hallmark printing subsidiary in Columbus GA. Beth has been active in both the St. Louis and Kansas City chapters of IIE, holding numerous officer positions including President, Secretary, Newsletter, and Membership. She resides in Lenexa with her husband Dave and 2 sons, ages 6 and 4.



Jay Christensen (Webmaster) – Jay is an Industrial Engineer for JCPenney Logistics (catalog and internet). He describes his main responsibilities as "problem solving and project management," but also wears "poster printing service," "A/V and tech guru," "webmaster" and "newsletter editor" hats. Jay received a BSIE from Kansas State in December 2003 but had a well-rounded, 13 semester education. His well-rounded education also included pretty good skills on the trombone, playing in the marching and jazz bands, and speaking Japanese. Jay has been active in the KC IIE chapter for many years, including serving as chapter president. Jay is continuing his dedication to the profession and to IIE by running for Regional Vice President (elections open until Feb 5th!).



8 – OFFICER PROFILES & LISTING CONT.

Teniece Hardy (MU Student Chapter Liaison) – Teniece Hardy is a Kansas City, MO native and graduated from Grandview High School in Grandview, MO. She then attended the University of Missouri-Columbia in which she interned with Hallmark Cards Inc. as a Process Improvement Engineer for three summers. Upon graduation, Teniece accepted a Section Manager I position at Hallmark Cards Inc. in which she has resided for 2 ½ years. Teniece Hardy, along with being a member Greater Kansas City IIE Chapter, is also a life member of Delta Sigma Theta Sorority Inc, and an Alumni Member of INROADS Inc.



President

Jairo de Jesus

Farmland Foods, Inc.

(816) 243-2840

jadejesus@farmland.com

President Elect

Kyle Grabill

Garmin

(913) 440-2174

kyle.grabill@garmin.com

Past President

Liz Fine

Hallmark Cards, Inc.

(816) 545-6064

lfine2@hallmark.com

Treasurer

Jennifer Hedberg

Hallmark Cards, Inc.

(816) 274-5545

jhedbe2@hallmark.com

Secretary

Aleia Vest

Nebraska Furniture Mart

(913) 288-6503

aleia.vest@nfm.com

Membership Chair

Rachel Olson

Hallmark Cards, Inc.

(816) 545-5269

rolson2@hallmark.com

Newsletter Editor

Anita Ranhotra

Hallmark Cards, Inc.

(816) 274-7265

aranho2@hallmark.com

Corporate Relations/JEC

Brian McCarthy

MAMTC

(913) 967-1226

bmccarthy@mamtc.com

Community Affairs

Beth Kelley

Hallmark Cards, Inc.

(913) 727-6692 ext. 486

bkelle1@hallmark.com

Webmaster

Jay Christensen

JCPenney's

(913)541-2324

kjchrist@jcpenny.com

KSU Student Chapter Liaison

Interim: Kyle Grabill and

Anita Ranhotra

MU Student Chapter Liaison

Teniece Hardy

Hallmark Cards, Inc.

(785) 843-9050 ext. 303

thardy5@hallmark.com

Chapter Advisory Board Members

Bill Czeschin,

(816)796-6231

Czeschin@comcast.net

Quarterman Lee

(816) 931-1414

qlee@strategosinc.com

Bill Wrennall

(913)681-8435

wrennall@tlg ltd.com