

Long Island Chapter 86 of the



Institute of Industrial Engineers

NEWS-LETTER

IIE-Vol.106 Issue 04

Gold Award Winner for 9 Straight Years (1997-2006)

June, 2007

Calendar of Events

June 19th, 2007 (Tuesday)

IIE Monthly Meeting
Topic: Details on right

Sept. 18th, 2007 (Tuesday)

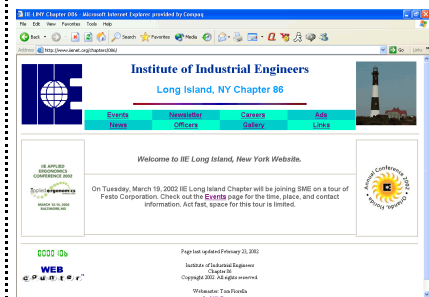
Topic: LIPA's Clean Energy Initiative Program for Renewable Energy

(Notice: This topic was originally scheduled for June. Due to speaker unavailability it has been rescheduled for Sept. - Sorry for any inconvenience!)

INSIDE THIS ISSUE

Page:1 - Meeting Announcement
Page:2 - President's Message
Page:2 - May Tour Remark
Page:2 - Membership Update
Page:2 - Chapter Election Results
Page:2 - Call for Presentations/tours
Page 3 - May Tour Review
Page:4 - Directions to June Meeting

Visit IIE Long Island Chapter on the web at:
www.iienet.org/long_island



June MEETING

Tuesday, June 19th, 2007

This is a Joint Dinner Meeting between AIAA, ASME, IIE, & SME

Time: Networking - 6:00pm, Dinner - 6:30pm, Presentation - 7:15pm

Place: Bertucci's at 881 Walt Whitman Road (Rt 110), Melville, NY

Cost: \$25 (Members / Guests), \$15 (Students)

Directions: see back page

Reservation Required: RSVP BY June 17, 2007 to: Gerry Yurchison (516) 346-3444 or email: gerry.yurchison@ngc.com

Topic: Accidents Happen: Behind the Headlines Inside the Process of Airplane Accident Investigation

Speaker: AIAA Distinguished Lecturer **John Purvis** Aviation Safety Consultant and retired Head of the Boeing Accident Investigation Team



John Purvis is an internationally-recognized expert in large aircraft safety and accident investigation. From 1982 through 1998, he led the accident investigation team at Boeing Commercial Airplane Group. During his tenure, the Boeing fleet experienced approximately 2,500 events, more than 250 of which were classified as accidents involving hull losses, fatalities, or major damage. John made a vital contribution to the safety of the world's fleet and to the flying public by coordinating the implementation of safety recommendations with Boeing's design, maintenance, and operations engineers. After retiring, he established a successful aviation safety consulting business. John is also a technical specialist in the fields of mechanical and fluid systems, and has degrees in mechanical and industrial engineering. He is a registered professional engineer, a private pilot; and holds a certificate in aviation accident investigation. In 2001, the International Society of Air Safety Investigators presented him with the prestigious Jerome F. Lederer award for outstanding contributions to technical excellence in accident investigation. He has spoken at government and industry safety meetings throughout the world, has served as panelist and speaker at many industry meetings and conferences, and has authored numerous technical papers and articles. John has also taught accident investigation courses at the FAA and other organizations and has served as a panel member at ALPA's basic accident investigation class.

Based on the last 24 years of John's 50 year career in aviation, the presentation will explore the field of large airplane accident investigation. After reviewing some history, John will outline the current process used to determine the probable causes after an airplane crash. He will discuss the respective roles of ICAO, NTSB, FAA, other governments and the parties (airline, airframe and component manufacturers, unions and others) working together toward a conclusion. John will convey the enormity of the accident investigation task and how it is accomplished in an organized, thorough and fair way and how the overall safety of the aviation system is enhanced in the process. He will show many accident photos and enhance their effect with "war stories" from his extensive career as a "tin kicker." This will not be an overly technical presentation.

Institute of Industrial Engineers - Long Island Chapter #86

Page 2

Offices 2006-2007

President/Treasurer:

Carolyn Chen

E-Z-EM, Inc.

B (516) 333-8230 Ext. 3423

H (718) 565-6820

email: cchen@ezem.com

Executive V.P.:

Roop Tawney

National Storage & Conveyor Systems, Inc.

B (631) 941-3900

M (631) 455-6460

email: NationalStorage1@aol.com

Secretary:

Bob Schroter

H (516) 489-4017

423 Elm St, West Hempstead, NY

11552-3226

email: rschroter@cs.com

Directors:

Robin Cole

H (631) 586-1253

Tom Fiorella

H (718) 258-3143

email: tfior9651@msn.com

Peter Kontigiannis

Quality Engineer

Smiths Aerospace LLC

B (631) 467-5500 x1411

H (516) 484-1773

email: pete@mivck.com

Richard Stripeikis

H (516) 872-8350

Newsletter:

Editor: Tom Fiorella

Assistant Editor: Carolyn Chen

*Distribution: Bob Schroter &
Richard Stripeikis*

PRESIDENT'S MESSAGE



I spent my Memorial Day weekend in Newport, Rhode Island. It was my fourth visit to Newport and a first for my husband. I've been trying to get him to take that trip with me for several years, and he finally caved in this May. Therefore, I knew it was very important to do activities that would interest him, instead of my usual shopping and mansion touring. We signed up for two sailing trips. One on a large schooner and one on a 6 passenger boat. The hair on my neck stood out when we signed up for the 'three hour tour', a la Gilligan, but we made it back, no problem.

Just in case they saw us at the competitor's booth, we explained to the sales clerk that we wanted to try two very different experiences, the large and the small. That's like experiencing the opposite extremes, in the environment where you work or live. I started my career in larger companies and have been downsizing (and been downsized). I've lived in large cities and small towns. I honestly don't prefer one over the other but have learned to appreciate the unique benefits of each extreme.

So, in our work and our recreational lives, we'll be better educated, more knowledgeable and more prepared for the unknown, if we continue to have a variety of experiences, instead of sticking purely to the old favorites. Now if only I had gotten him to agree to this trip earlier so that we weren't there at high, premium season. He and I are at each extreme of how we "plan ahead".

Chapter 86, President

Carolyn Chen

May Tour Remark by Tom Fiorella

Due to restrictions imposed by Estee Lauder a number of members and/or guess could not be accommodated on the May tour. I am sorry for any disappointment or inconvenient that this may have caused.

MEMBERSHIP

Current Active Membership = 70

About IIE

Founded in 1948, IIE is the premier society dedicated to serving the professional needs of industrial engineers and all individuals involved with improving quality and productivity. IIE has over 15,000 members and more than 280 chapters.

There are hundreds of job titles given to people, who manage, design, install, or maintain integrated systems of people, machinery, and information. No matter what your job title, if you are the person called upon for solutions when there is an issue that requires your attention, you belong in IIE.

**To become a member of IIE call
1-800-494-0460 or log onto to
www.iienet.org & click on Join IIE & then
on IIE Professional Members**

IIE-Long Island Chapter Election Results

The following have been confirmed by the membership for the Chapter Year Sept. 2007 - August 2008:

President: Thomas G. Fiorella

Vice President: Robert P. Schroter

Secretary/Treasurer: Carolyn Chen

Director: Roop Tawney

Director: Richard Stripeikis

The following will be serving the 2nd yr. of a 2-Yr. Term:

Director: Robin Cole

Director: Peter Kontigiannis

The installation of the elected chapter offices for 2007 - 2008 will take place at the September 2007 meeting.

Call for Presentations / Tours

If you would like to sponsor or recommend a meeting presentation or plant tour please contact Tom Fiorella or Bob Schroter (see contact information on the left).

Institute of Industrial Engineers - Long Island Chapter #86

Page 3

Review of the May Tour / Meeting Estee Lauder - Manufacturing / ASR Facility, Melville, NY

By: Tom Fiorella



In 1946, Estee Lauder started her company with a jar of skin cream developed by a chemist uncle and the desire to bring out the beauty in every woman. Even before there were labels for the earliest Estee Lauder skin creams, they began to win loyal fans. By the time the revolutionary fragrance Youth-Dew was introduced in 1953, the Estee Lauder Company had already won a reputation for innovation, research and quality.

Today, the Estee Lauder collection of skincare, makeup and fragrance exemplifies the best that art and science can achieve. The Estee Lauder name on a product is recognized in over 100 countries for quality maintained and promises kept.

On the evening of Thursday, May 24th the group of chapter members were treated to a tour of Estee Lauder's manufacturing and ASR (automatic storage retrieval) facility in Melville, NY. The Melville facility has established Worldwide Work Centers for the following products: Lipsticks, Tubes, Creams, and Lotions. The manufacturing approach is to produce like products across the various brands that Estee Lauder sells.

The tour group first visited the tube filling area where all the different brands of lotions are packaged. Amanda Egan and Tom Caulfield of the tube workcenter area provided a good narrative on this area's operation. Plastics drums, which are previously filled in the compounding / mixing area, with the product that is to be packaged into the tubes is pumped out of the drum and fed to the tube filling machine.

Operators load empty tubes into the filling machine where the machine dispenses the proper amount of lotion into each tube. The machines then seals the tube and ejects the product for the operator to hand-load into the retail package / box.

Next up on the tour was the area where creams are dispensed into jars. Tom Caulfield showed the group a jar of La Mer which is considered one of Estee Lauder's high end creams and represents supreme luxury and serious treatment. This product was acquired in 1995 and is sold in more than 30 countries. The machine used for this jar filling operation is surrounded by a plastic strip curtain to keep out dust particles and other contaminants.



In the lipsticks manufacturing room we were shown how the material for different shades of lipsticks starts out as a wax type substance. The material is then heated and liquified in a portable chamber, which makes for quick change-overs, and then pumped into the dispensing equipment into the lipstick mold fixture. The material is then re-solidified and the excess waste material is shaved-off by the machine to be reused. Operators on the machine check for quality and remove any defective sticks, which will be reused. Operators at the other end insert the lipstick into the packaging.



In the compound mixing room our tour guide explained and showed how the ingredients are mixed and blended according to recipes in the large vessels and dispensed into the plastic drums which are then distributed to the filling stations throughout the plant. This facility mixes 20,000 Kilograms of creams & lotions a day.

It was then onto the warehouse where we walked through the overhead bridge which connects the manufacturing facility to the ASR (Automated Storage Retrieval) building where there are 36,000 pallet positions (consisting of about 30 aisles 11 pallets high by 98 pallet positions deep). The lights, which are normally off, were turned on in the ASR aisles so we could see how the stackers (one for each aisle) puts-away and retrieves pallets of raw materials and finished product. A computer system keeps track of inventory and empty spaces. The computer program for the ASR will fill spaces from the front to the back to optimize travel time. Pallets can be placed in any module location due to reliable tracking.

The final stop on the tour was the picking and staging area of the warehouse. In this area AGV's (automatic guided vehicles) which are wired guided (imbedded in the floor) and controlled by the computer, can accommodate two pallets at a time. These vehicles move 45 pallets per hour / 800 per day between the production staging area, the ASR warehouse, and the picking and receiving areas. In the picking area there are six pick-to-light zones. Individual items and cases are picked and each order is weight verified.

If you would like to learn more about Estee Lauder's products you can visit their website at www.esteelauder.com or you can get additional information on the Estee Lauder Companies Inc. at www.elcompanies.com. I would like to thank all of the Estee Lauder personnel who assisted in making this tour a memorable experience including: Michael Fischetti (Director, Production), Amanda Egan & Tom Caulfield (Production -Tube Workcenter), Michelle Iaquinto (Production Lipstick Room/East Workcenter), Michael Birnstill (Production - East Workcenter), Boyde Gladle (Tech Services), John Schneyer (Distribution), Steve Forgione (Production Staging), Carlos Shimabukura & Tom Stone (ASR Facility) and Maria Malovich (Executive Dir. Industrial Engineering) for providing the initial contact information.

Next IIE Meeting - Tuesday, June 19th, 2007 at 6:00pm

Topic: Accidents Happen: Behind the Headlines Inside the Process of Airplane Accident Investigation

(This is a joint dinner meeting with AIAA, ASME, IIE, & SME)

Speaker: AIAA Distinguished Lecturer **John Purvis** Aviation Safety Consultant and retired Head of the Boeing Accident Investigation Team

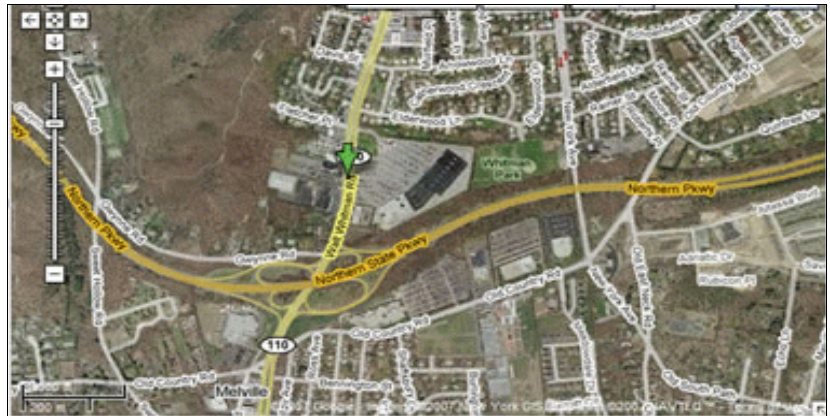
Place: Bertucci's at 881 Walt Whitman Road (Rt 110), Melville, NY

(See Page 1 for Meeting Details - including reservations information & cost)

Directions to Bertucci's:

881 Walt Whitman Road (Rt 110),
Melville, NY

LIE to Exit 49 North, or Northern State to exit 40 North. Exit onto Walt Whitman Road (Rt 110) and move immediately into the left lane. Turn left at Bertucci's, less than 0.25 miles north of the Northern State Parkway.



June, 2007 Newsletter

Institute of Industrial Engineers

Local Chapter # 86

423 Elm Street

W. Hempstead, NY 11552-3226

Postmaster:

Address Service Requested & Forwarding Service Requested

DATED MATERIAL

