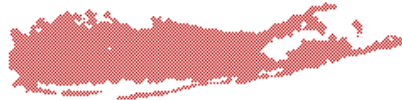


Long Island & Metro NY Chapter



Institute of Industrial Engineers

NEWS-LETTER

IIE-Vol.107 Issue 04

Gold Award Winner for 10 Straight Years (1997-2007)

April, 2008

Calendar of Events

April 17th, 2008 (Thursday)
IIE March Meeting
Topic: Details on right

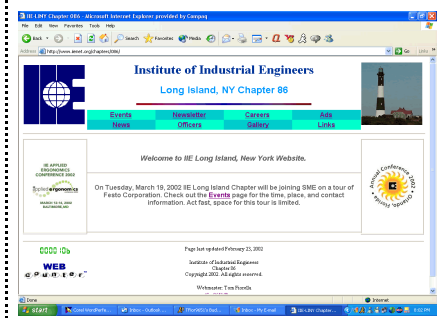
May 20th, 2008 (Thursday)
Topic: Tour of Cooper Lighting
Place: Hicksville, NY

June, 16th, 2008 (Monday)
TBA

INSIDE THIS ISSUE

Page:1- Meeting Announcement
Page:2 - President's Message
Page:2 - Career Opportunity
Page:2 - Membership Information
Page:3 - Review of the March Tour
Page 4 - Registration Form for April Meeting

Visit IIE Long Island Chapter on the web at:
www.iienet.org/long_island



IIE Annual Conference and Expo
2008

May17-21
Vancouver, British Columbia, Canada

For Details Logon to:
www.iienet.org/annual2

April MEETING

Thursday, April 17th, 2008

Time: Networking/Refreshments - 5:45pm, Presentation: 6:15pm

Place: ADP's Midtown Manhattan Office at One Penn Plaza

Meeting Fee: no charge, A Lite buffet/dinner/refreshments will be provided by ADP

This is a joint event with the Long Island & NY Chapters of **IIE & SME**
Preregistration Required (see back page)

Topic: LEAN for the Office

Speaker: Richard Lanna, Senior VP of Operations at ITAC (Industrial and Technology Assistance Corporation), the local MEP affiliate for NYC.



When we hear about LEAN principles, we usually associate them with manufacturing and how they have transformed the way we think about production on the factory floor. Many of us are familiar with or have at least heard of the Toyota Production System (TPS), which has its roots dating back to Henry Ford, in part, and more recently to the Japanese, and specifically Toyota, after World War II.

Today many companies around the world, including many in the USA, are being transformed by adopting LEAN practices, which can also be utilized in non-manufacturing or office/administrative environments.

Richard Lanna's presentation will include the following principles, concepts, techniques and best practices:

- The history, meaning and purpose of Lean - TPS (Toyota Production System)
- Recognizing and minimizing the 8 NVA Wastes
- The Lean Toolbox: 5S, VSM, TPM, SMED, Cellular Mfg, Pull/Kanban, LPD
- Applications of Lean in the Front Office
- Case Examples - Putting it to work

About the Speaker: During Richard Lanna's 17 years in the Manufacturing Extension Partnership (MEP) System, both at LIFT (on Long Island) and at ITAC (NYC), he has worked directly with clients as a Field Engineer as well as worked on the internal development of ITAC in his previous role as Director of Client Development, and in his present position as Senior Vice President of Operations and a member of ITAC's Management Team.

Rich is presently responsible for co-managing the service development and field staff operations for ITAC's core MEP consulting business, and for building ITAC's practice area teams. He is also the primary trainer for ITAC in the Lean Manufacturing (TPS) area. In the last 15 years, Rich has provided Lean training and implementation guidance and assistance to hundreds of growing NYC manufacturers and thousands of individuals within those companies, including Lean Principles, VSM, 5S, SMED, TPM, Cellular Mfg, Pull/Kanban Systems, Lean Metrics and Lean Culture, in a variety of Office and Shop Floor environments.

Rich received a B.S. in Industrial Engineering and an MBA in Finance from the New York Institute of Technology. In addition to his technical training and MEP Lean Trainer certification, Rich has had extensive sales experience and training with the Sandler and Wilson Learning sales training organizations.

Registration is required. See back page for registration information.

Institute of Industrial Engineers - Long Island Chapter #86

Page 2

Offices 2007-2008

President:

Tom Fiorella

Air Techniques, Inc.
B (516) 214-5588
H (718) 258-3143
email: tfior9651@msn.com

Vice President:

Bob Schroter

H (516) 489-4017
423 Elm St, West Hempstead, NY
11552-3226
email: rschroter1@optonline.net

Secretary/Treasurer:

Carolyn Chen

E-Z-EM, Inc.
B (516) 333-8230 Ext. 3423
H (718) 565-6820
email: cchen@ezem.com

Directors:

Robin Cole

Consultant
H (631) 586-1253

Peter Kontigiannis

Product Assurance Engineer
Cox and Company
B (212) 366-0200 x534
H (516) 484-1773
email: pkontog@coxandco.com

Richard Stripeikis

H (516) 8728350

Roop Tawney

National Storage & Conveyor Systems,
Inc.
B (631) 941-3900
M (631) 455-6460
email: NationalStorage1@aol.com

Newsletter:

Editor: Tom Fiorella
Assistant Editor: Carolyn Chen
Distribution: Bob Schroter &
Richard Stripeikis

PRESIDENT'S MESSAGE



Last month the Long Island Chapters of IIE & SME attended the tour of American Technical Ceramics in Huntington Station, NY. I would like to thank Industrial Engineering member Don Watkins and other members of the ATC staff for their hospitality. ATC is a good example of LEAN principles being placed into practice. Please see the review of the tour on page 3.

In regards to lean I recently came across a website that provides information on the history of Lean. It is a good reminder that Lean gets its roots from basic Industrial Engineering teachings dating back to Frederick W. Taylor, Frank Gilbreth, and Henry Ford. For the Lean History lesson visit the website at www.strategosinc.com/just_in_time.htm.

This month's IIE meeting will be the first one to take place in Manhattan since 1999. The newly merged chapters of Long Island and Metro NY along with members of SME will be on hand for a presentation on 'Lean for the Office' presented by IIE member Richard Lanna of ITAC. I have already heard from many of you who have expressed enthusiasm in regards to the return of an IIE meeting to NYC. I encourage all NY & Long Island members to show your support and make an effort to attend this event. Hopefully this will be the first of many events to take place in the city in the coming months / years.

In regards to the merger of the Long Island and Metro NY chapters we are considering a name change to the chapter that would be more fitting and representative of the geographical area of the newly expanded Chapter. One possibility is the Greater NY Chapter. Please send me your thoughts and comments. The plan is to have the Chapter Board select a name, which would be put to a vote before the Chapter's membership. The name change proposal will be on the Chapter's Ballot that will be sent out in November.

On the weekend of March 27-30 the IIE Region 1 Conference was held at the University of Pittsburgh. A portion of the event, on Saturday afternoon, was webcast with Region 1 VP John Corliss providing the Student and Senior Chapters an update and a presentation on how to keep your chapter up to date in the green. I expect that a full report of the Region 1 Conference will appear in a planned Region 1 Newsletter.

Chapter 86, President
Tom Fiorella

CAREER OPPORTUNITY

MECHANICAL / INDUSTRIAL ENGINEER - Fast growing industry leader in lighting manufacturing seeks an experienced Design Engineer to work in our R & D Department.

Organizes design project by identifying short-term and long-range issues; preparing timetables, cost estimates, and required resources. Determines product requirements by studying product concept, features, specifications, sketches and existing models; analyzing user and potential user input; conferring with design engineers and product managers. Develop and analyze prototypes and provide engineering support relative to root cause of failures with recommendations.

Requirements: BSME, Working knowledge of Solid Works (Autodesk Inventor is a plus) Experience using SAP is a plus Analytical Documentation skills At least 3+ years of Engineering experience in Lighting Must have ability to handle multiple tasks in a high stress environment Technical and sheet metal manufacturing background helpful Position requires self-motivated and dependable professional Requires excellent verbal and written English communication skills Knowledge of Six Sigma for Design and Lean Manufacturing a plus.

Reply: Competitive salary / benefits. Resume / salary history and req. to: Employee Relations Manager, Cooper Lighting, 100 Andrews Rd., Hicksville, NY 11801, e-mail to HRHicksville@cooperlighting.com or fax (516) 470-1079. EOE m/f/d/v

For Complete details on this position go to www.iienet.org/long_island and click on the CAREERS link.

MEMBERSHIP

**Current Active Membership
Long Island Chapter & Metro Chapters
Combined = 134**

About IIE

Founded in 1948, IIE is the premier society dedicated to serving the professional needs of industrial engineers and all individuals involved with improving quality and productivity. IIE has over 15,000 members and more than 280 chapters worldwide

Who benefits from membership?

There are hundreds of job titles given to people, who manage, design, install, or maintain integrated systems of people, machinery, and information. No matter what your job title, if you are the person called upon for solutions when there is an issue that requires your attention, you belong in IIE.

**To become a member of IIE call
1-800-494-0460
or log onto to
www.iienet.org & click on Membership
then on Join IIE**

Next IIE / SME Meeting - Thursday, April 17th, 2008

Topic: LEAN FOR THE OFFICE

Time: Networking/Refreshments: 5:45PM, Presentation : 6:15PM - 8PM

Place: ADP - One Penn Plaza, Midtown Manhattan

(see page 1 for details)

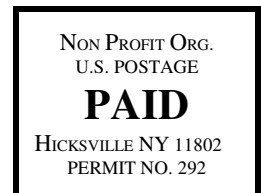
Note space for this event is limited. So please register early. Reservation must be received no later than **Tuesday, April 15th** Fax to: **Tom Fiorella, 516-740-4616**, or Mail to: **Bob Schroter, 423 Elm St, West Hempstead, NY 11552-3226**, or email: **Tom Fiorella at tfior9651@msn.com** with: **Name, Title, Company for yourself and each guest. Contact person please indicate: address, member affiliation (IIE / SME), phone, fax, and/or email address.** For inquiries call Tom at 516-214-5588

NAME	TITLE	COMPANY

Send Directions to: _____	Phone Day: _____	Member Affiliation (IIE/SME): _____
Address: _____	Phone Eve. _____	Include fax or email for a speedy reply.
Address: _____	Fax: _____	You will receive complete directions and instructions to ADP's Office at One Penn Plaza once your reservation has been received.
City/State/Zip: _____	email: _____	

April, 2008 Newsletter

Institute of Industrial Engineers
Local Chapter # 86
423 Elm Street
W. Hempstead, NY 11552-3226



Postmaster:
Address Service Requested & Forwarding Service Requested

DATED MATERIAL